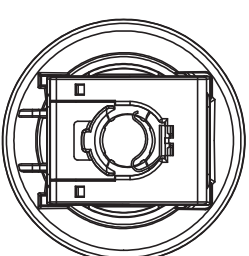
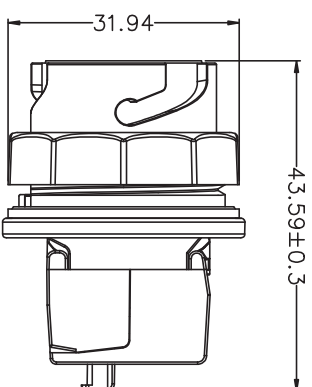
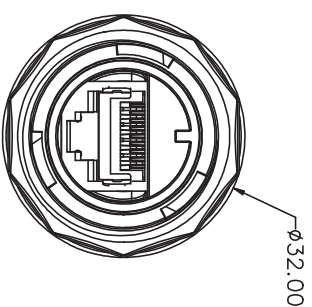


Recommended cutting on panel,  
panel thickness:0.7~2.5mm



**ELECTRICAL:**

Current rating : 1.5A

Dielectric withstanding voltage : 1000V/AC 60Hz

Insulation resistance : 500 M $\Omega$  MIN.

Contact resistance : 20 mΩ MAX.

MECHANICAL:

**Durability: RJ45 With 750 Mating Cycles and RJ11 With 200 Mating Cycles**

Wiring Properties: STP 22~26 AWG

Supporting Cable Diameter: 6~9mm

Operating Temperature:-10°C to +60°C

Storage Temperature: -40°C to +70°C

MEETS IP68 STANDARD

### Re-Termination capability:

AWG 22/1~26/1: 20 times

**MATERIAL:**

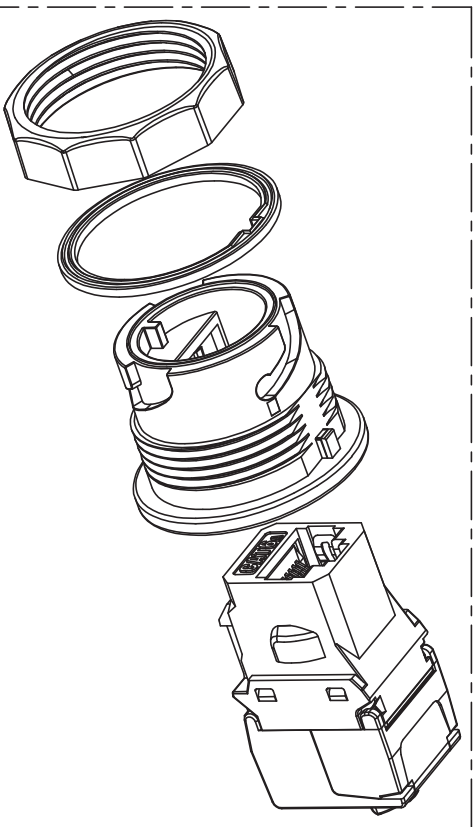
Housing: PA66



Seal Ring: SILICONE RUBBER

RJ45 Jack:

Housing: Zinc-alloy ,Nickel Plated

Contact: Phosphor bronze, 50u" Gold Plating



	
Title: RJ45 Cat 6A built-in connector with USA connection black	
Date	2024 / 05 / 29
Unit	mm
Projection	
Rev	A
File No.	
Item no.	67047
Barcode	4043619670475
	88467