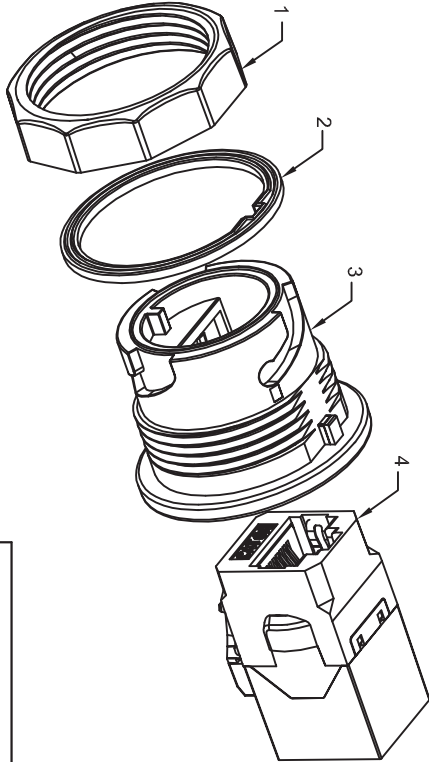


Recommended cutting on panel,  
panel thickness:0.7~2.5mm

ELECTRICAL  
CURRENT RATING : 1.5A  
DIELECTRIC WITHSTANDING VOLTAGE : 1000VAC  
INSULATION RESISTANCE : 500 MΩ MIN.  
CONTACT RESISTANCE : 20 mΩ MAX.  
MEETS IP68 STANDARD

MECHANICAL  
(1) PA66  
(2) SILICONE RUBBER  
(3) PBT + GF  
(4) Zn alloy + Nickel Plated



Dat	2024 / 05 / 29	Title: RJ45 Cat.6A built-in connector black	
Unit	mm	Item no.	67048
Projection		Barcode	4043619670482
Rev	A	File No.	88467

**DLOCK**  
we move the world