

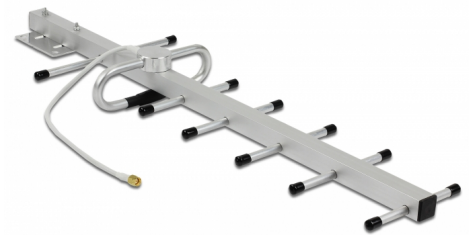
Delock LPWAN 806 - 896 MHz Yagi Antenna SMA plug 10 dBi fixed directional wall and pole mounting outdoor

Description

This antenna by Delock allows the usage of the 806 - 896 MHz band indoors and outdoors.

LPWAN

LPWAN (Low Power Wide Area Network) are radio networks that cover large distances. They are characterized by a high reception sensitivity and by a low energy consumption.



Item no. 12569

EAN: 4043619125692

Country of origin: China

Package: Box

Technical details

- Connector: 1 x SMA plug
- Frequency range: 806 - 896 MHz
- LoRa, Sigfox, ZigBee, Z-Wave
- Antenna gain: 10 dBi
- Impedance: 50 Ohm
- VSWR: 1.5
- Polarisation: vertical, horizontal
- HBW horizontal beamwidth: 60°
- VBW vertical beamwidth: 50°
- Operating temperature: -40 °C ~ 60 °C
- Housing material: aluminium alloy
- Colour: silver
- Dimensions (L): ca. 586 mm
- Weight: ca. 0.5 kg
- Maximum wind speed: 60 m/s

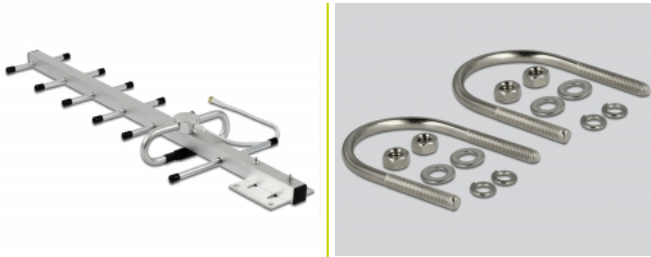
System requirements

- Device with a free SMA jack

Package content

- Antenna
- Mounting material

Images



General

Suitable for outdoor:	yes
-----------------------	-----

Interface

connector:	1 x N female
------------	--------------

Technical characteristics

Frequency range:	806 - 896 MHz
Antenna gain:	10 dBi
Beam width horizontal:	60°
Beam width vertical:	50°
Operating temperature:	-40 °C ~ 60 °C
Polarisation:	vertical
VSWR:	1.5

Physical characteristics

Length:	586 mm
Maximum wind speed:	60 m/s