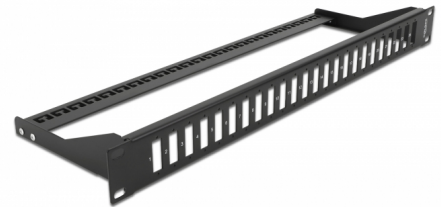


# Delock 19" Fiber Panel for 24 x SC Duplex / LC Quad

## Description

This patch panel by Delock can be mounted in a 19" rack. It offers 24 installation spaces for individual assembly of SC Duplex or LC Quad adapters.



**Item no. 43406**

EAN: 4043619434060

Country of origin: China

Package: Box

## Technical details

- For mounting in 19" racks, 1U
- Rectangular cut-out: 26.2 x 9.6 mm
- Pitch of screw hole: ca. 30.7 mm
- Removable strain relief
- Housing colour: black
- Dimensions (LxWxH): ca. 482.6 x 150.0 x 43.6 mm

## Package content

- 19" patch panel

## General

Mounting type:	19 in
----------------	-------

## Physical characteristics

Housing colour:	black
Depth:	150 mm
Width:	482.6 mm
Height:	43.6 mm