

# Delock Mobile Rack PCI Express Card for 1 x M.2 NVMe SSD - Low Profile Form Factor

## Description

This mobile rack by Delock can be installed into a free PC slot of the computer and provides an **M.2 slot** in 2280, 2260, 2242 or 2230 format.

## Quick change of SSD

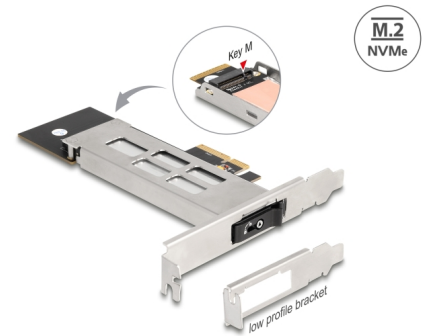
Due to the special mechanism, the SSD can be **exchanged quickly and easily**. For example, data backups can be taken and stored in a safe place.

## Tray with key lock and springs

The mobile rack is equipped with a **key lock** to prevent unauthorised access. The stable carrier of metal has **springs** on the top and bottom which reduce vibrations.

## Note

Special care must be taken that the tray is fully inserted, otherwise no connection to the SSD can be established.



**Item no. 47028**

EAN: 4043619470280

Country of origin: China

Package: Box

## Technical details

- Connectors:
  - PCIe card:
    - 1 x PCI Express x4, V4.0
    - 1 x M.2 key M slot
  - M.2 tray:
    - 1 x M.2 key M male
    - 1 x M.2 key M slot
- Interface: PCIe / NVMe
- Supports M.2 modules in format 2280, 2260, 2242 and 2230 with key M or key B+M based on PCIe
- Maximum height of the components on the module: 1.5 mm, application of double-sided assembled modules supported
- 1 x LED indicator
- Bootable, ex UEFI version 2.3.1

- M.2 tray made of metal
  - Supports NVM Express (NVMe)
  - Supports S.M.A.R.T.
  - Operating temperature: -40 °C ~ 85 °C
- 

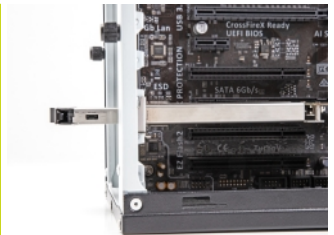
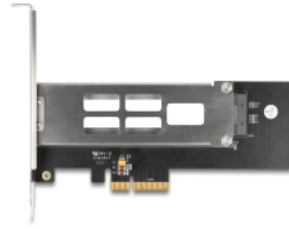
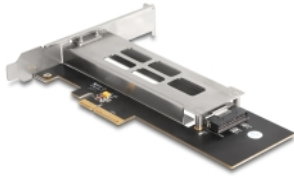
## System requirements

- Linux Kernel 5.15 or above
  - Windows 10/10-64/11
  - Windows Server 2022
  - PC with one free PCI Express x4 / x8 / x16 / x32 slot
- 

## Package content

- Mobile Rack
- M.2 tray
- Low profile bracket
- Heat sink
- Screws
- 2 x keys
- User manual

## Images



## General

Form factor:	Low Profile
Function:	Bootable, ex UEFI 2.3.1
Supported operating system:	Windows 10 32-Bit Windows 10 64-Bit Windows 11 Linux Kernel 5.15 or above Windows Server 2022
LED indicator:	1 x
Supported module:	M.2 modules in format 2280, 2260, 2242 and 2230 with key M or key B+M based on PCIe
Maximum height of the components on the module:	1.5 mm application of double-sided assembled modules supported

## Interface

Internal:	1 x PCI Express x4, V4.0 1 x M.2 key M slot
-----------	--