

# Delock USB Type-C™ Converter for 1 x M.2 NVMe SSD + 1 x SATA SSD / HDD with Clone Function

## Description

This converter by Delock enables the **simultaneous operation** of an M.2 NVMe SSD, in 2280, 2260 and 2242 format, and a 2.5" or 3.5" SATA HDD or SSD through the USB-C™ interface.

### Clone Function without PC

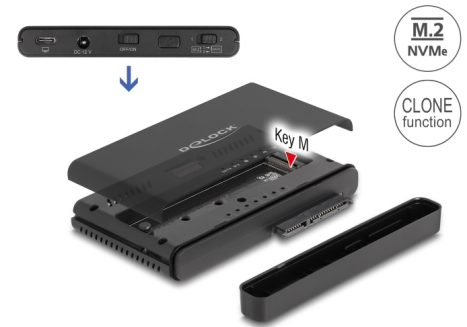
The built-in clone function allows to clone memory without using a PC. It is possible to clone from **NVMe to SATA** and **SATA to NVMe**.

### Extensive connectivity

Due to the specially designed adapter, the Delock converter can be quickly and easily connected to the **USB Type-A socket**. Thus, it can be easily connected to new devices with **USB Type-C™ female** and older devices that only have a USB Type-A connector. The adapter is located directly on the cable and therefore it cannot be lost.

### SSD installation without tools

No tools are required to install the M.2 SSD. The lid can be pushed backwards by a little pressure, the SSD will be attached to the PCB with a rubber nipple and then the lid is reattached until it locks.



**Item no. 64190**

EAN: 4043619641901

Country of origin: China

Package: Retail Box

## Technical details

- Connectors:
  - 1 x USB 10 Gbps USB Type-C™ female
  - 1 x M.2 key M slot
  - 1 x SATA 6 Gb/s 22 pin receptacle
  - 1 x DC jack
- Chipset: JMicron JMS581D
- Supports M.2 modules in format 2280, 2260 and 2242 with key M or key B+M based on PCIe (NVMe)
- Maximum height of the components on the module: 1.5 mm, application of double-sided assembled modules supported
- For 2.5" and 3.5" SATA HDD / SSD
- Supports NVMe Express (NVMe)

- Supports S.M.A.R.T.
  - Supports TRIM
  - Supports Native Command Queuing (NCQ)
  - Data transfer rate up to 10 Gbps
  - Supports UASP
  - 7 x LED indicator for power, access and copy status
  - Bootable
  - Function key:
    - 1 x Clone button
    - 1 x On / Off switch
    - 1 x switch for clone mode
  - Dimensions (LxWxH): ca. 102 x 67 x 14 mm
  - Hot Plug, Plug & Play
- 

## Power supply specification

- Wall power supply
  - Input: AC 100 ~ 240 V / 50 ~ 60 Hz / 0.6 A
  - Output: 12 V / 2 A
  - Ground outside, plus inside
  - Dimensions:
    - inside:  $\varnothing$  ca. 2.5 mm
    - outside:  $\varnothing$  ca. 5.5 mm
    - length: ca. 10 mm
- 

## System requirements

- Android 11.0 or above
  - Chrome OS
  - Linux Kernel 5.11 or above
  - Mac OS 11.2.3 or above
  - Windows 8.1/8.1-64/10/10-64/11
  - iPad Air (4th Generation) or above
  - iPad Pro (3rd Generation) or above
  - Surface Pro 7
  - PC or laptop with a free USB Type-A port or
  - Device with a free USB Type-C™ port or with a free Thunderbolt™ 3 port
- 

## Package content

- USB Type-C™ converter
- Cable USB-C™ male to USB-C™ male (with adapter to USB Type-A male), length ca. 30 cm
- 1 x thermal conductive pad
- 1 x thermal conductive plate
- External power supply 12.0 V / 2.0 A
- User manual

## Images



## General

Function:	bootable Clone Function
Suitable for data medium:	2.5" 3.5"
Supported operating system:	Chrome OS Surface Pro 7 Windows 10 32-Bit Windows 10 64-Bit Windows 8.1 32-Bit Windows 8.1 64-Bit iPad Pro (3rd Generation) or above iPad Air (4th Generation) or above Mac OS 11.2.3 or above Windows 11 Linux Kernel 5.11 or above Android 11.0 or above
LED indicator:	7 x
Slot:	PCIe
Supported module:	M.2 modules in format 2280, 2260 and 2242 with key M or key B+M based on PCIe

## Interface

Connector 1:	1 x USB 10 Gbps USB Type-C™ female
Connector 2:	1 x SATA 6 Gb/s 22 pin receptacle
connector 3:	1 x 67 pin M.2 key M slot
connector 4:	1 x 12 V DC jack

## Technical characteristics

Chipset:	JMicron JMS581D
----------	-----------------

## Physical characteristics

Cable length:	30 cm
---------------	-------

Colour:

black

