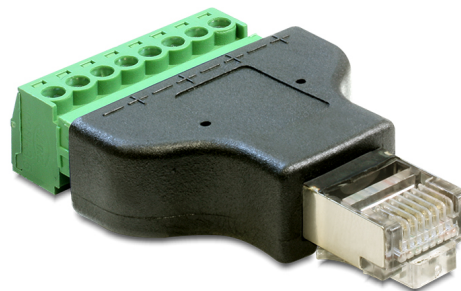


# Delock Adapter RJ45 male > Terminal Block 8 pin 2-part 3.5 mm

## Description

This terminal block adapter by Delock can be used to connect bare wires. Thus the adapter is not only convenient for special industry applications, but also for the hobby area, e.g. railway modelling.



**Item no. 65389**

EAN: 4043619653898

Country of origin: China

Package: Zip poly bag

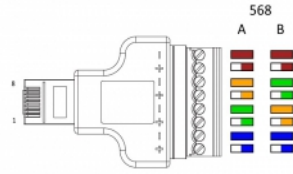
## Technical details

- Connectors:
  - 1 x RJ45 male
  - 1 x 8 pin terminal block
- Pitch: 3.5 mm
- Removable Terminal Block
- Dimensions (LxWxH): ca. 53.7 x 34 x 12.9 mm

## Package content

- Adapter

## Images



Wire Map	
RJ45 male	terminalblock
1	3
2	4
3	5
4	2
5	1
6	6
7	7
8	8