

# Delock DIN Rail 35 x 7.5 mm (25 cm) Steel

## Description

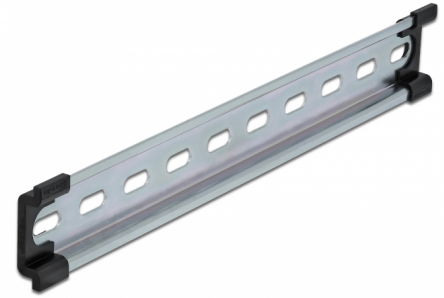
This DIN rail by Delock can be used to mounting different electronic devices and components.

### Multifunctional application

The DIN rail can be mounted in a control cabinet and is used as a mounting system, e.g. for power supplies, screw terminals and interface modules.

### Simple mounting option

To allow easy installation, the DIN rail is provided with slot holes.



**Item no. 66192**

EAN: 4043619661923

Country of origin: China

Package: White Box

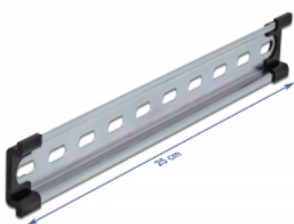
## Technical details

- Mounting hole: 15.0 x 6.2 mm
- Material: steel
- Dimensions (LxWxH): ca. 250.0 x 35,0 x 7,5 mm

## Package content

- 1 x DIN rail
- 2 x end cover

## Images



### Physical characteristics

Material:	steel
Length:	250 mm
Width:	35 mm
Height:	7.5 mm