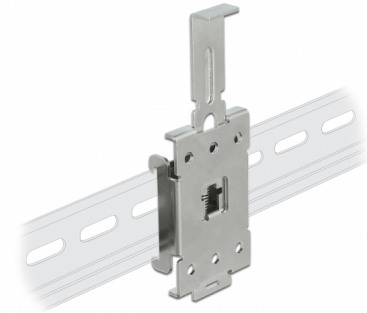


Delock DIN rail adapter

Description

This DIN rail adapter by Delock can be used to mount e.g. an embedded PC on a 35 mm DIN rail.

[DIN rail adapter](#)



Item no. 66332

EAN: 4043619663323

Country of origin: Taiwan,
Republic of China

Package: Zip poly bag

Technical details

- DIN rail mounting: 35 mm
- 6 mounting holes
- Mounting hole diameter: 4.5 mm
- Pitch of screw hole:
horizontally ca. 13.5 mm
vertical ca. 45 mm
- Spring mechanism
- Material: metal
- Dimensions (LxWxH): ca. 114 x 40 x 15 mm

System requirements

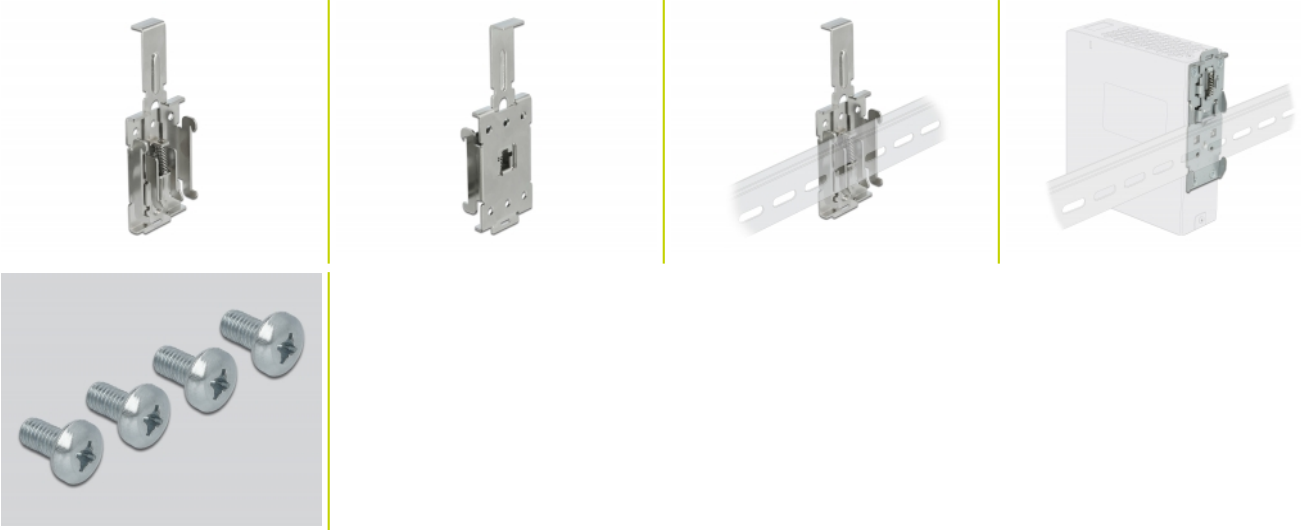
- 35 mm DIN rail

Package content

- DIN rail adapter

- 4 x screw M4

Images



General

Mounting type:	DIN rail mounting: 35 mm
----------------	--------------------------

Physical characteristics

Screw type:	M4
Material:	metal
Length:	114 mm
Width:	40 mm
Height:	15 mm