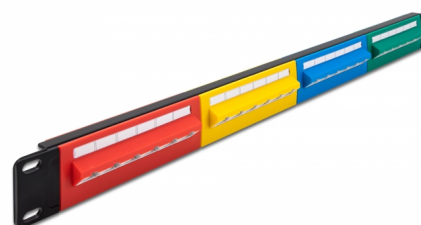


Delock 19" Patch Panel 24 port Cat.5e 1U coloured

Description

This patch panel by Delock can be mounted in a 19" cabinet. Up to 24 network cables can be installed at the LSA blocks, using a punch down tool.



Item no. 66880

EAN: 4043619668809

Country of origin: China

Package: Box

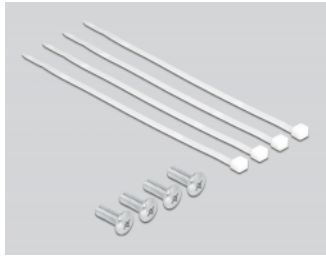
Technical details

- Connectors:
 - 24 x RJ45 jack >
 - 24 x LSA
- For mounting in 19" network cabinet, 1U
- With labelling field
- Compliant with Cat.5e requirements of ANSI/TIA 568-C
- TIA-568A/B pinout
- For solid or stranded wire (26 - 22 AWG)
- Material: metal / plastic
- Colour: red, yellow, blue, green
- Dimensions (LxWxH): ca. 482.6 x 44.5 x 33.4 mm

Package content

- 19" patch panel
- 4 x cable tie 4.6 x 200 mm
- 4 x screw M6 x 16 mm

Images



General

Mounting type:	19 in
----------------	-------

Interface

Connector 1:	24 x RJ45 jack
Connector 2:	24 x LSA

Physical characteristics

Conductor gauge:	26 - 22 AWG
Material:	metal / plastic
Length:	482.6 mm
Width:	44.5 mm
Height:	33.4 mm
Colour:	red, yellow, blue, green