

# Delock Easy 45 Module Plate 2 x Rectangular cut-out 17 x 24.3 mm, 45 x 45 mm 5 pieces black

## Description

This module plate by Delock is used to mount an optionally available Keystone mounting. The simple snap-in mechanism ensures that the cover is firmly in place and can be easily and toolless changed if necessary.

### Use a wide variety of keystones

This module plate is designed to accommodate two optionally available keystone holders. With more than 140 different Keystone modules from our assortment, the module plate can be configured for almost any application. The matching keystone holders are available in 6 different colors. Thus it is possible to color code different application areas.

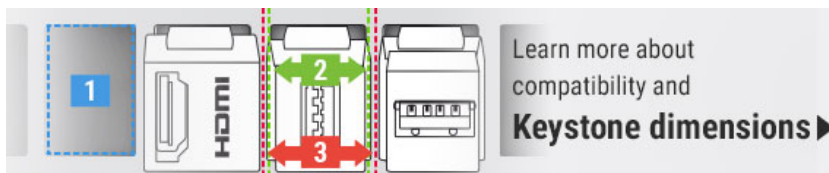


**Item no. 81401**

EAN: 4043619814015

Country of origin: China

Package: Zip poly bag



## Easy 45 connects

Easy 45 is a variable, modular system that allows components such as sockets, HDMI or USB connections to be added according to your needs. The Easy 45 modules are standardised and can be mounted in various module holder or cable ducts. Easy 45 builds the interface between electrical, network and system installation and many peripheral devices such as TV, monitors, printers, laptops and much more.

## Technical details

- Material: PC plastic
- Suitable for module holder Delock Easy 45
- Suitable for 45 mm cable duct with minimum depth 45 mm
- Module size: 45 x 45 mm

- 2 x Rectangular cut-out 17.0 x 24.3 mm
- Dimensions (LxWxH): ca. 45.0 x 45.0 x 22.0 mm
- Colour: black

---

## System requirements

- A free module port Delock Easy 45 (45 x 45 mm)

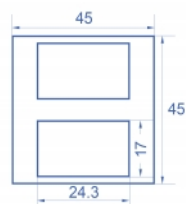
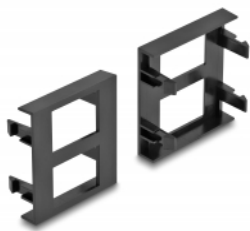
---

## Package content

- 5 x module plate

---

## Images



## General

Mounting type:	Easy 45
----------------	---------

## Physical characteristics

Housing material:	Plastic
Length:	22.0 mm
Width:	45 mm
Height:	45 mm
Colour:	black