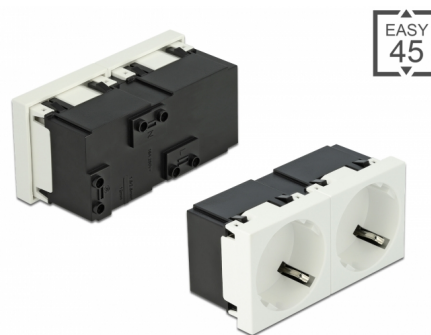


# Delock Easy 45 Grounded Power Socket 2-way with a 45° arrangement 45 x 45 mm

## Description

This power socket by Delock is designed to provide two CEE 7/3 power connections. The simple snap-in mechanism ensures that the module is firmly in place and can be easily removed if necessary.



**Item no. 81423**

EAN: 4043619814237

Country of origin: China

Package: Zip poly bag

## Technical details

- Connectors:
  - 2 x socket CEE 7/3
  - 3 x screw terminal for PE, N, L
- Rated current: 16 A / 250 V~
- Rated power: 4000 W
- Sockets in a 45° arrangement
- Material: ABS / PC plastic
- Suitable for module holder Delock Easy 45
- Suitable for 45 mm cable duct with minimum depth 45 mm
- Module size: 90 x 45 mm
- Dimensions (LxWxH): ca. 90 x 45 x 39 mm
- Colour: white

## System requirements

- Mains supply with grounding
- Two free module port Delock Easy 45 (45 x 45 mm)

---

## Package content

- 1 x Power socket 2-way
- User manual

---

## Images



## Interface

Connector 1:	1 x 3 Pin Terminalblock Steckklemme
Connector 2:	2 x Steckdose CEE 7/3 mit Kindersicherung

## Physical characteristics

Length:	90 mm
Width:	45 mm
Height:	39 mm
Colour:	RAL 9003 Weiß