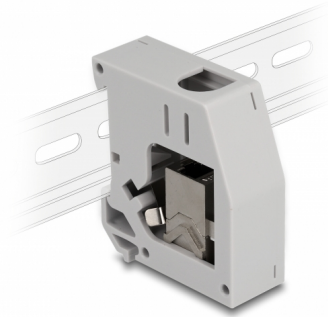


Delock DIN rail Adapter with Keystone Module RJ45 jack to RJ45 jack Cat.6A

Description

This adapter by Delock contains a matching keystone module with an RJ45 jack that can be used to connect a network cable. At the same time, the adapter can be attached to a 35 mm wide DIN rail to enable e.g. the installation in a network cabinet. The adapter also has a small labelling field which can be individually labelled or provided with various symbols.



Item no. 86959

EAN: 4043619869596

Country of origin: China

Package: Zip poly bag

Technical details

- Connectors:
 - 1 x RJ45 jack >
 - 1 x RJ45 jack
- Cat.6A specification
- Shielded (STP)
- DIN rail mounting: 35 mm
- Stackable
- With labelling field
- Operating temperature: -10 °C ~ 60 °C
- Material: plastic, zinc die cast
- Colour: grey
- Dimensions (LxWxH): ca. 60.5 x 56.3 x 21.6 mm

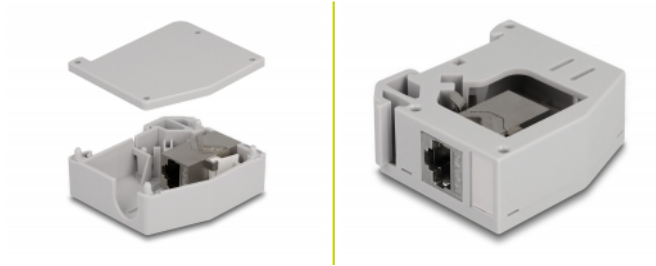
System requirements

- 35 mm DIN rail

Package content

- DIN rail adapter with Keystone module

Images



General

Mounting type:	DIN rail 35 mm
Specification:	Cat. 6A

Interface

Connector 1:	1 x RJ45 jack
Connector 2:	1 x RJ45 jack

Technical characteristics

Operating temperature:	-10 °C ~ 60 °C
------------------------	----------------

Physical characteristics

Material:	plastic, zinc die cast
Length:	60.5 mm
Width:	56.3 mm
Height:	21.6 mm