

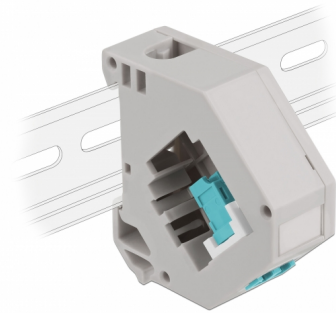
# Delock DIN rail Adapter with Keystone LC Duplex female to LC Duplex female aqua

## Description

This adapter by Delock contains a suitable Keystone module with a LC Duplex coupler that can be used to connect optical fiber cables.

### DIN rail mounting

The adapter can be attached to a 35 mm wide DIN rail. In addition, the adapter also has a small labelling field which can be individually labelled or provided with various symbols.



**Item no. 87194**

EAN: 4043619871940

Country of origin: China

Package: Zip poly bag

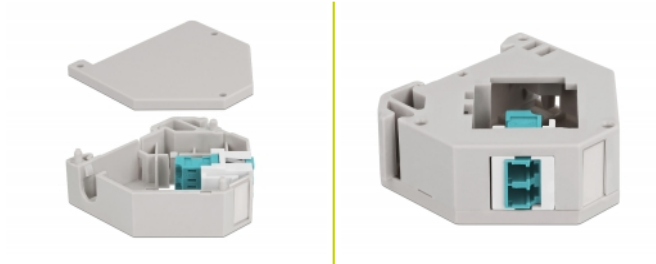
## Technical details

- Connectors:
  - 1 x LC Duplex female >
  - 1 x LC Duplex female
- DIN rail mounting: 35 mm
- Stackable
- With labelling field
- Operating temperature: -40 °C ~ 85 °C
- Material: plastic
- Colour: grey / white / aqua
- Dimensions (LxWxH): ca. 60.1 x 59.4 x 21.6 mm

## Package content

- DIN rail adapter

## Images



## General

|                |                          |
|----------------|--------------------------|
| Mounting type: | DIN rail mounting: 35 mm |
|----------------|--------------------------|

## Interface

|              |                      |
|--------------|----------------------|
| Connector 1: | 1 x LC Duplex female |
| Connector 2: | 1 x LC Duplex female |

## Technical characteristics

|                        |                |
|------------------------|----------------|
| Operating temperature: | -40 °C ~ 85 °C |
|------------------------|----------------|

## Physical characteristics

|           |                     |
|-----------|---------------------|
| Material: | Plastic             |
| Length:   | 60.1 mm             |
| Width:    | 59.4 mm             |
| Height:   | 21.6 mm             |
| Colour:   | grey / white / aqua |