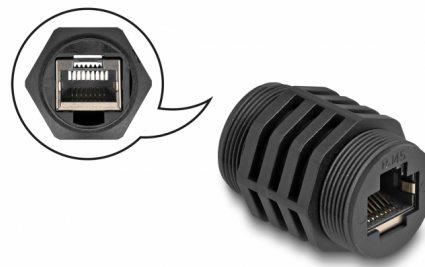


Delock RJ45 Cat.6A Built-in module IP67 dust and waterproof

Description

This RJ45 coupler by Delock can be used in a switch cabinet or distribution box to connect or extend two RJ45 plugs together. In combination with the Delock feed-through coupler (86995), it provides a secure and waterproof connection.



Note

A waterproof connection only exists in combination with the feed-through coupler (86995).

Item no. 87255

EAN: 4043619872558

Country of origin: China

Package: Zip poly bag

Technical details

- Connectors:
 - 1 x RJ45 jack
 - 1 x RJ45 jack
- Cat.6A specification
- For built-in installation
- Built-in hole Ø: 26 mm
- Housing material: plastic
- Colour: black
- Dimensions (LxD): ca. 31.6 x 25.0 mm

System requirements

- RJ45 feed-through coupler (86995)

Package content

- RJ45 module

Images



General

Specification:	Cat. 6A
----------------	---------

Interface

Connector 1:	1 x RJ45 jack
Connector 2:	1 x RJ45 jack

Physical characteristics

Housing material:	Plastic
Diameter:	25 mm
Length:	31.6 mm
Colour:	black