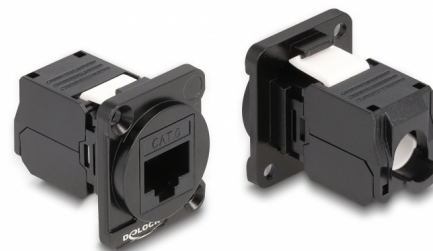


Delock D-Type Module RJ45 Cat.6 female to LSA female

Description

This module by Delock can be mounted e.g. in panels or cases with D-type openings for XLR jacks. This makes it ideal for integrating digital equipment into professional audio systems.



Item no. 87816

EAN: 4043619878161

Country of origin: China

Package: Zip poly bag

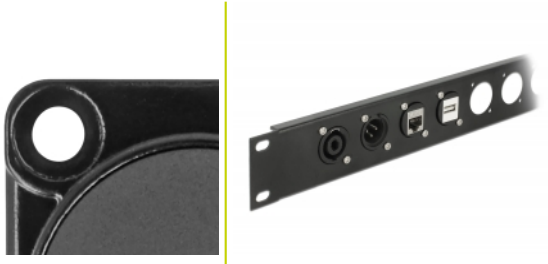
Technical details

- Connectors:
 - external: 1 x RJ45 jack
 - internal: 1 x LSA jack
- Material: zinc die cast
- Colour: black
- For D-type ports with 31 x 25 mm
- Panel cut-out (diameter): ca. 24 mm
- Two mounting holes for screw fastening
- Dimensions (LxWxH): ca. 35 x 31 x 25 mm

Package content

- D-Type module

Images



General

Mounting type:	D-Type
----------------	--------

Interface

Connector 1:	1 x RJ45 jack
Connector 2:	1 x LSA 180° (toolfree)

Physical characteristics

Diameter:	24 mm
Length:	35 mm
Width:	31 mm
Height:	25 mm
Colour:	black