

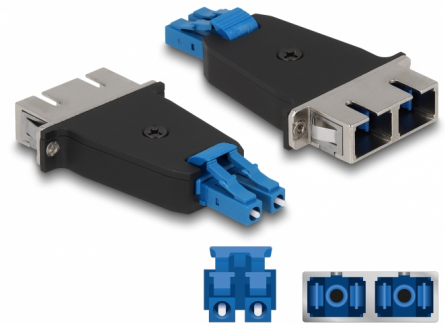
# Delock Optical Fiber Hybrid Coupler LC Duplex male to SC Duplex female blue

## Description

This LC Duplex to SC Duplex hybrid coupling by Delock enables the conversion from one connector type to the other. This means that LC and SC optical fiber cables can be easily connected to each other and they are suitable for mounting in optical fiber connection boxes, cabinets and patch panels.

### Protection by dust cover

The coupling is equipped with an appropriate cap to protect the sleeve from dust and to keep it clean.



**Item no. 87947**

EAN: 4043619879472

Country of origin: China

Package: Zip poly bag

## Technical details

- Connectors:
  - 1 x LC Duplex male
  - 1 x SC Duplex female
- Insertion loss < 0.3 dB
- Return loss > 60 dB
- Ceramic sleeve
- With dust cover
- Mounting via metal holder or with screws
- 2 x mounting holes
- Mounting hole diameter: ca. 2.3 mm
- Pitch of screw hole: ca. 18 mm
- Operating temperature: -40 °C ~ 80 °C
- Colour: blue / black
- Material: plastic / metal
- Dimensions (LxWxH): ca. 70.0 x 35.3 x 9.6 mm

## System requirements

- A free LC Duplex female port
- A free SC Duplex male port

---

## Package content

- Optic fiber coupler
- 2 x screw

---

## Images



## Interface

Connector 1:	1 x LC Duplex male
Connector 2:	1 x SC Duplex female

## Technical characteristics

Operating temperature:	-40 °C ~ 80 °C
------------------------	----------------

## Physical characteristics

Material:	plastic, metal
Length:	70.0 mm
Width:	35.3 mm
Height:	9.6 mm
Colour:	blue / black