

Delock PCI Express x2 Card for 4 x SATA HDD / SSD RAID

Description

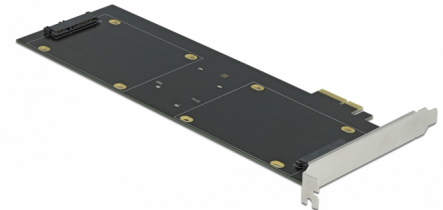
This PCI Express card by Delock expands the PC by four SATA 22 pin ports. **Up to four 2.5" SSD / HDD** can be connected to this card. When using more than one SATA port, there is the possibility to use **different RAID modes**.

HyperDuo support

The card supports a HyperDuo function. With this function it combines an SSD and an HDD to use the advantages of both data mediums, the speed of an SSD and the capacity of an HDD.

RAID support

Furthermore, the card also supports various RAID modes such as RAID 0, 1, 10 or JBOD. Also, if enough SSD or HDD are installed, **two different RAID modes can be used at the same time**. For example, two hard disks with RAID 0 and two hard disks can be configured in HyperDuo or RAID 0 and RAID 1.



Item no. 90433

EAN: 4043619904334

Country of origin: China

Package: Retail Box

Technical details

- Connectors:
 - internal:
 - 1 x PCI Express x4 (2-Lane), V2.0
 - 4 x SATA 22 pin receptacle
- Chipset: Marvell 88SE9230
- Suitable for 2.5" SATA HDD / SSD:
 - SATA HDD / SSD up to 6 Gb/s
 - supports 5 V HDD / SSD
- Supports RAID 0, 1, 10, JBOD, HyperDuo Virtual Disk (Safe/Capacity)
- Bootable
- Supports Native Command Queuing (NCQ)
- Supports S.M.A.R.T.
- Supports TRIM
- Supports DevSleep
- Hot Swap

- Dimensions (LxWxH): ca. 227 x 120 x 20 mm

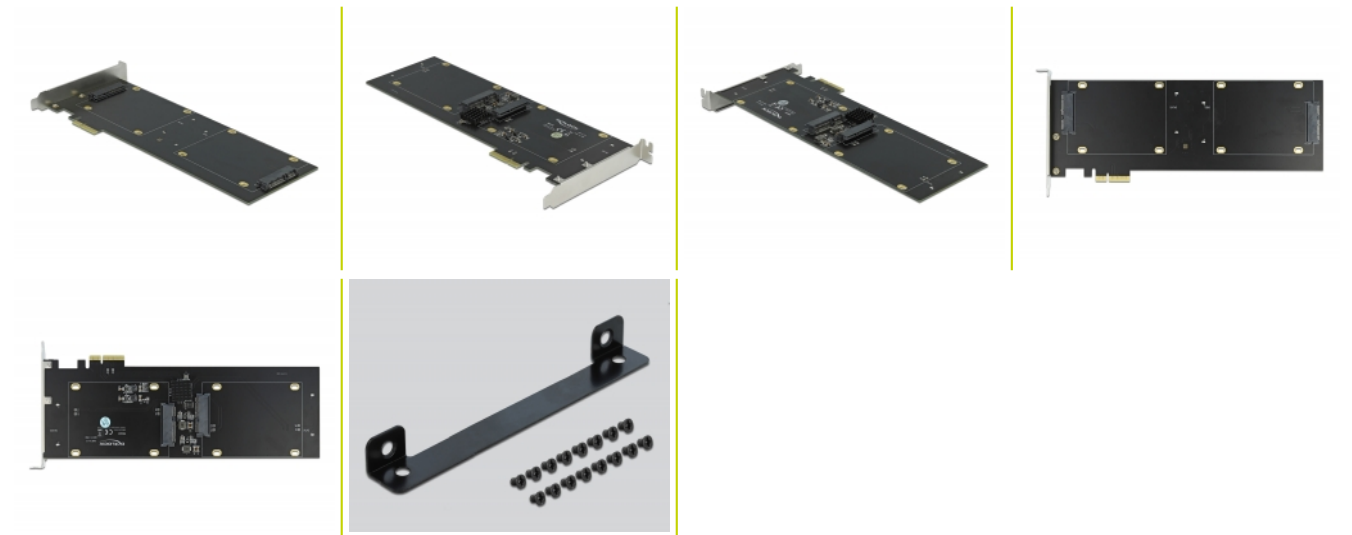
System requirements

- Linux Kernel 4.9.4 or above
- Windows 7/7-64/8.1/8.1-64/10/10-64
- PC with one free PCI Express x4 / x8 / x16 / x32 slot

Package content

- PCI Express card
- 16 x fixing screw
- 4 x HDD / SSD mounting bracket
- Driver CD
- User manual

Images



General

Function:	Plug & Play bootable
Suitable for data medium:	SSD or HDD
Supported operating system:	Linux Kernel 4.9.4 or above Windows 10 32-Bit Windows 10 64-Bit Windows 7 32-Bit Windows 7 64-Bit Windows 8.1 32-Bit Windows 8.1 64-Bit
Slot:	PCIe

Interface

Internal:	1 x PCI Express x1, V2.0 4 x SATA 6 Gb/s 22 pin receptacle
-----------	---

Technical characteristics

Data transfer rate:	SATA up to 6 Gb/s
---------------------	-------------------

Physical characteristics

Slot bracket:	standard
---------------	----------