

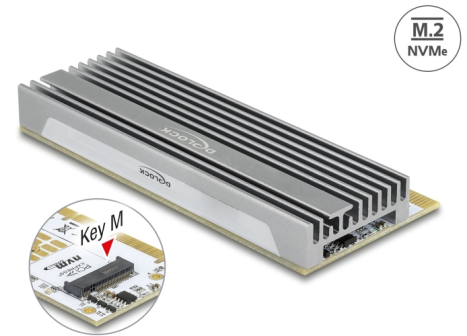
Delock PCI Express x16 (x4 / x8) Card to 1 x NVMe M.2 Key M with LED illumination

Description

This PCI Express card by Delock expands the PC by one **M.2 slot**. One M.2 module in 2280, 2260, 2242 or 2230 format can be connected. The card can be operated through the notches on an x4, x8 or x16 slot. If the card will be installed in the PC, the slot bracket does not have to be removed.

Heat sink and LED illumination

With the help of the large heat sink sufficient cooling of the M.2 modules is guaranteed. The PCIe card has 7 LEDs to illuminate the computer's interior. The **RGB LEDs** automatically change their color in a **colour gradient** and use the complete colour spectrum.



Item no. 90566

EAN: 4043619905669

Country of origin: China

Package: Retail Box

Technical details

- Connectors:
 - 1 x M.2 key M slot
 - 1 x PCI Express x16 (4-Lane), V4.0
- Interface: PCIe
- Supports M.2 modules in format 2280, 2260, 2242 and 2230 with key M or key B+M based on PCIe
- Bootable, ex UEFI version 2.3.1
- Supports NVM Express (NVMe)
- Supports S.M.A.R.T.
- Supports TRIM
- 1 x LED indicator for power and activity
- 7 x RGB LED for automatically colour gradient
- Dimensions (LxWxH) without heat sink: ca. 98 x 44 x 5 mm

System requirements

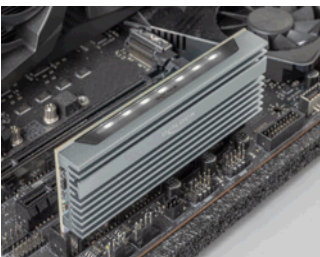
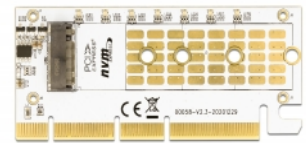
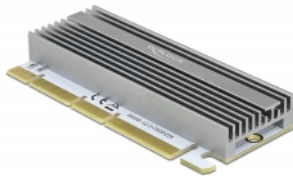
- Linux Kernel 5.8 or above
- Windows 8.1/8.1-64/10/10-64

- PC with one free PCI Express x4 / x8 / x16 / x32 slot

Package content

- PCI Express card
- M.2 mounting material
- Heat sink
- Thermal conductive pad
- Screwdriver
- User manual

Images



General

| | |
|---|---|
| Function: | Bootable, ex UEFI 2.3.1 NVM Express (NVMe) TRIM S.M.A.R.T. |
| Supported operating system: | Linux Kernel 5.8.0 or above Windows 10 32-Bit Windows 10 64-Bit Windows 8.1 32-Bit Windows 8.1 64-Bit |
| LED indicator: | power and activity 7 x RGB LED for automatically colour gradient |
| Slot: | PCIe |
| Supported module: | M.2 modules in format 2280, 2260, 2242 and 2230 with key M or key B+M based on PCIe |
| Maximum height of the components on the module: | 1.5 mm application of double-sided assembled modules supported |

Interface

| | |
|--------------|------------------------------------|
| Connector 1: | 1 x 67 pin M.2 key M slot |
| Connector 2: | 1 x PCI Express x16 (4-Lane), V4.0 |