

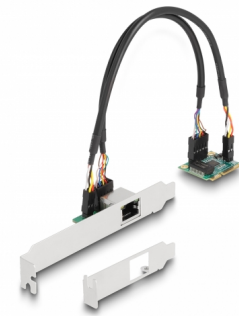
Delock Mini PCIe I/O PCIe half size 1 x RJ45 2.5 Gigabit LAN

Description

This Mini PCIe module by Delock expands a system by **one 2.5 Gigabit LAN interface**, which can be lead out via the slot bracket.

NBASE-T for higher speed

Modern services and new technologies require higher bandwidths. NBASE-T technology enables speeds of **1 Gbps and 2.5 Gbps with conventional networking cables**. The best possible transmission rate is set automatically.



Item no. 95271

EAN: 4043619952717

Country of origin: China

Package: Retail Box

Technical details

- Connectors:
 - internal: 1 x Mini PCIe male
 - external: 1 x 2.5 Gigabit LAN RJ45 jack
- Chipset: Realtek RTL8125B
- Form factor: Mini PCIe half size
- Interface: PCI Express revision 2.1
- Data transfer rate:
 - Ethernet up to 10 Mbps (Half/Full Duplex)
 - Fast Ethernet up to 100 Mbps (Half/Full Duplex)
 - Gigabit Ethernet up to 1000 Mbps (Half/Full Duplex)
 - NBASE-T with up to 2.5 Gbps (Half/Full Duplex)
 - PCI Express x1 up to 4 Gbps
- Supports IEEE 802.3 / 802.3u / 802.3ab
- Supports Wake On LAN (WOL)
- Supports IEEE 802.1P layer 2 priority encoding
- Supports IEEE 802.3x full duplex flow control
- Supports IEEE 802.1Q Virtual LAN (VLAN)
- Supports 9k Jumbo Frames
- LED indicator for link and activity

- Cable length with connectors: ca. 25 cm

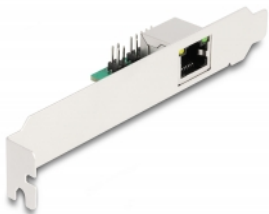
System requirements

- Windows 8.1/10/11
- Motherboard with a free Mini PCIe slot with a PCIe interface
- PC with one free slot

Package content

- Mini PCIe module
- 2 connecting cable
- Slot bracket
- Low profile bracket
- Driver CD
- User manual

Images



General

Form factor:	Mini PCIe half size
Supported operating system:	Windows 10 32-Bit Windows 10 64-Bit Windows 8.1 32-Bit Windows 8.1 64-Bit Windows 11

Interface

connector:	1 x RJ45 jack
------------	---------------

Technical characteristics

Chipset:	Realtek RTL8125
Data transfer rate:	Ethernet up to 10 Mbps Fast Ethernet up to 100 Mbps Gigabit Ethernet up to 1 Gbps Gigabit Ethernet up to 2.5 Gbps

Physical characteristics

Cable length incl. connector:	25 cm
Slot bracket:	Low Profile standard